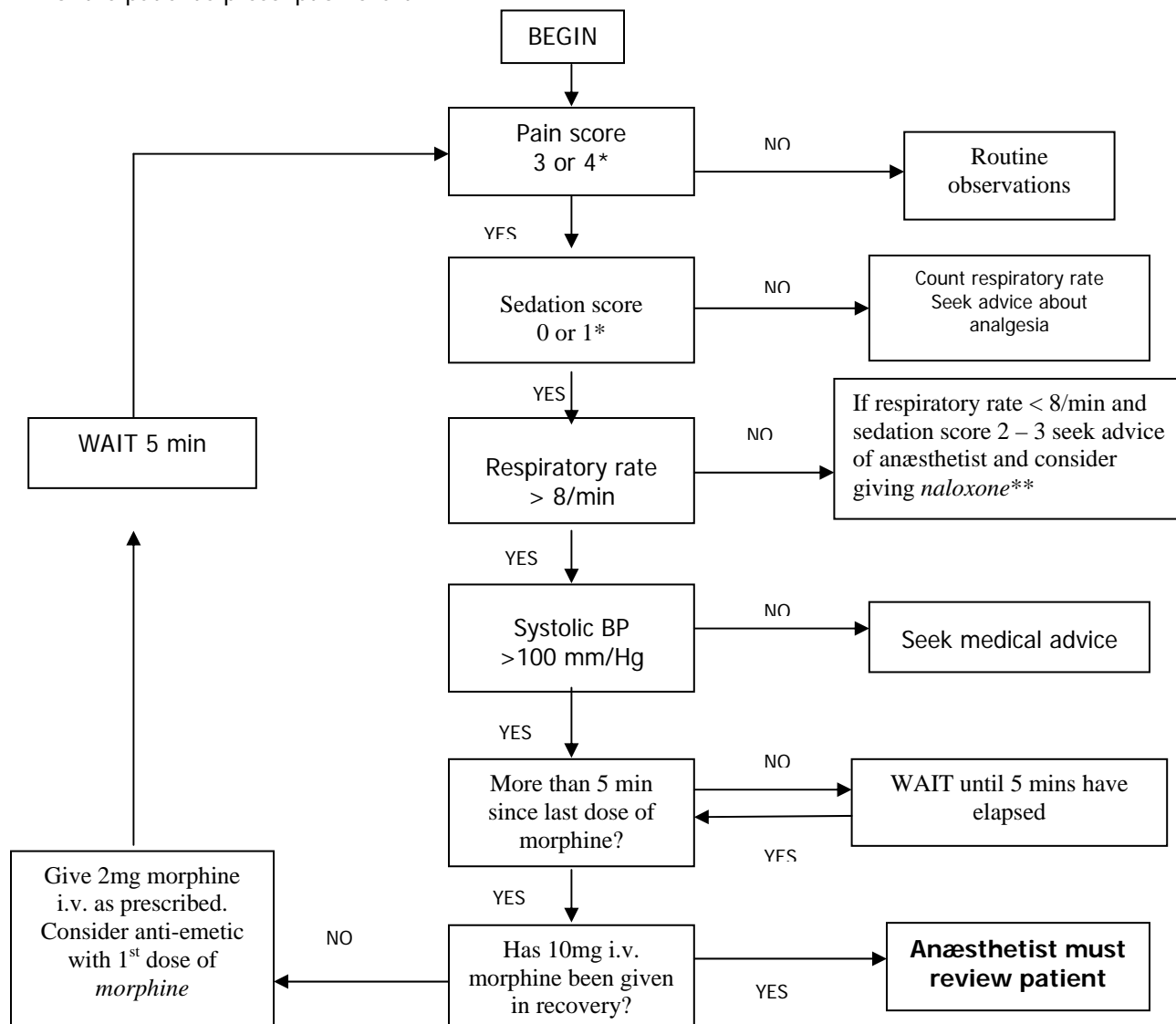


## Algorithm for postoperative intravenous morphine administration in Recovery unit.

The individual administering the drug is personally responsible for checking the contents of the syringe. All solutions contain 10mg morphine made up to 10ml with N/Saline. Recovery staff **must not** use morphine brought around from theatre by the anaesthetist. Any morphine to be administered by nursing staff must be prescribed by the anaesthetist on the "once-only" section of the patient's prescription chart.



\* UCLH pain/sedation score  
 \*\* *Naloxone* i.v. dose 100-400µg slowly  
 i.m. dose 400µg

### Pain and Sedation Scoring System

#### Pain Score (R = rest ; M = movement)

4	Worst possible pain
3	Severe pain
2	Moderate pain
1	Mild pain
0	No pain

#### Sedation Score

3	Unrousable
2	Asleep/Rousable
1	Drowsy
0	Awake